

[www.etaspa.net](http://www.etaspa.net)

CATALOGO

# START

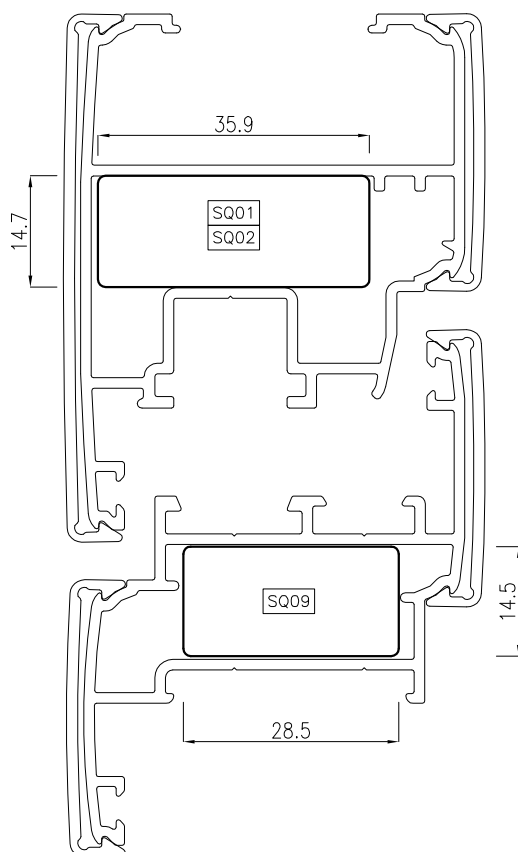
SERIE

CLICK

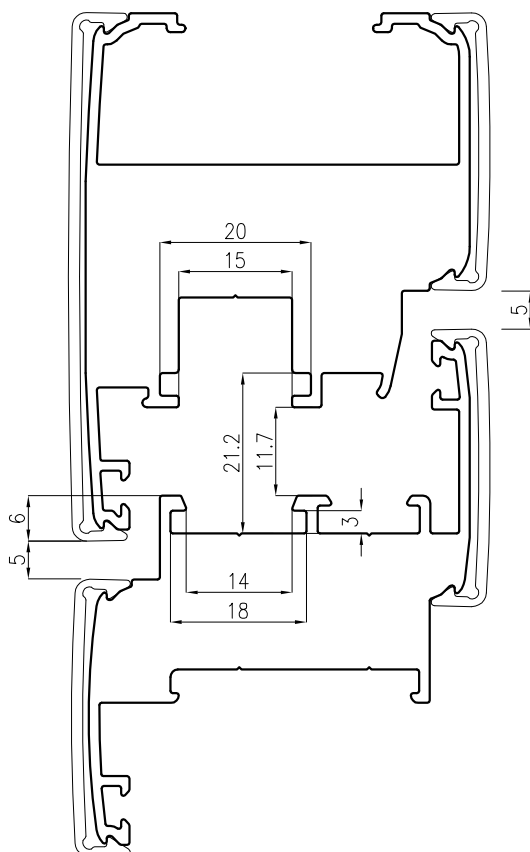


# ETA

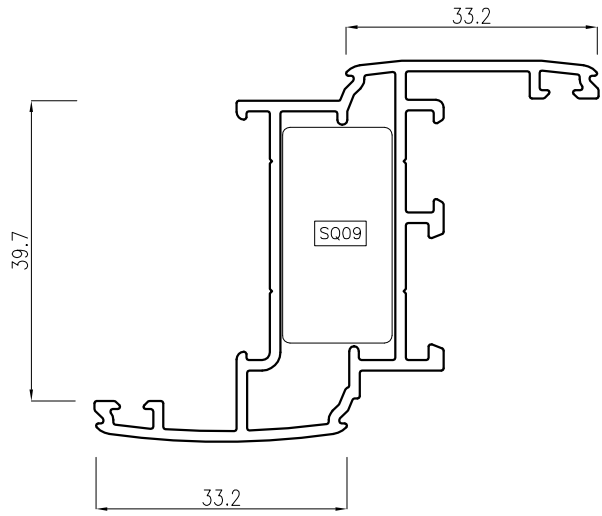
DIMENSIONI SQUADRETTE



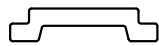
DIMENSIONI CAMERA EUROPEA UNIFICATA



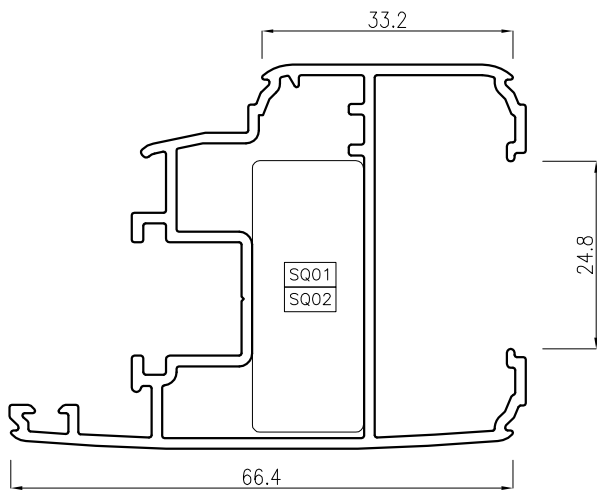
CODICE Peso	PROFILO	DESCRIZIONE	CODICE Peso	PROFILO	DESCRIZIONE
E 41000 0.135		ASTINA	E 41648 0.389		COPERTINA A SCATTO
E 41048 0.864		TELAIO "Z"	E 41649 0.402		COPERTINA A SCATTO
E 41125 1.061		ANTA	E41657 0.336		RIDUTTORE DA 10 mm CON PORTA SPAZZOLINO
E 41201 0.866		RIPORTO CENTRALE (finestra)	E 10013 0.348		OVALINA
E 41206 0.694		RIPORTO CENTRALE (persiana)	V 80008 0.525		LAMELLA ORIENTABILE
E 41327 1.479		FASCIA	V 80009 0.263		LAMELLA DI COMPENSAZIONE MINIMA
E 41606 0.318		RIDUTTORE DA 10 mm	V 80010 0.384		LAMELLA DI COMPENSAZIONE MASSIMA
E 41644 0.359		POSIZIONATORE			
E 41645 0.189		COPERTINA A SCATTO			
E 41646 0.256		COPERTINA A SCATTO			
E 41647 0.324		COPERTINA A SCATTO			



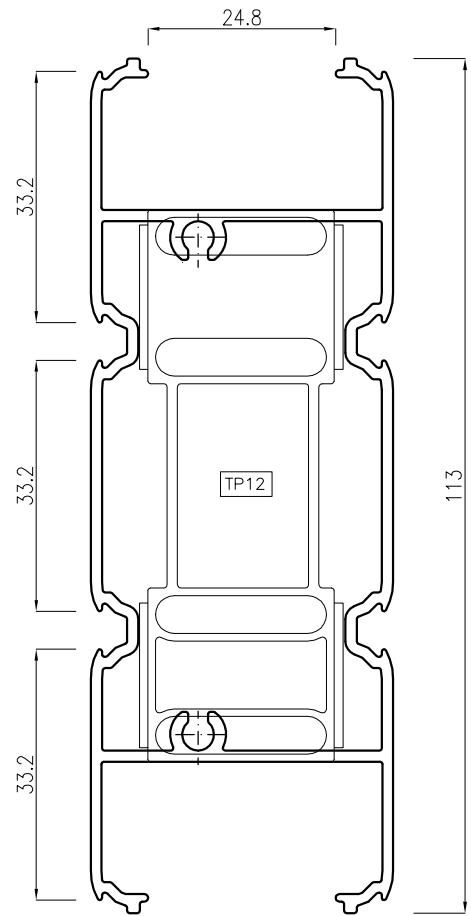
**E41048**  
0.864 Kg/m



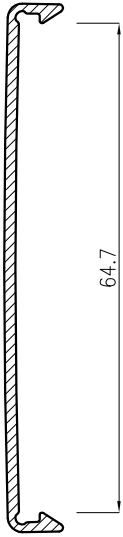
**E41000**  
0.135 Kg/m



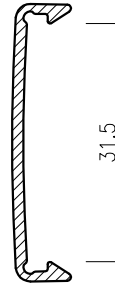
**E41125**  
1.061 Kg/m



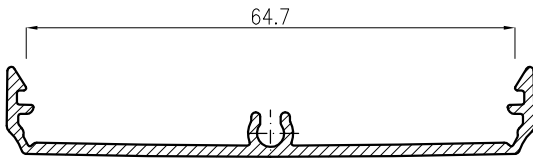
**E41327**  
1.479 Kg/m



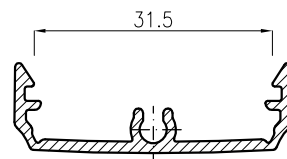
**E41647**  
0.324 Kg/m



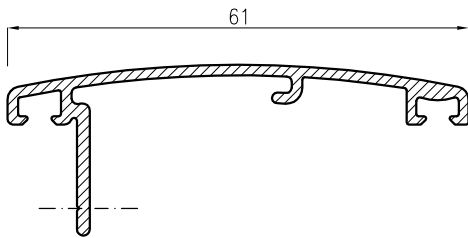
**E41645**  
0.189 Kg/m



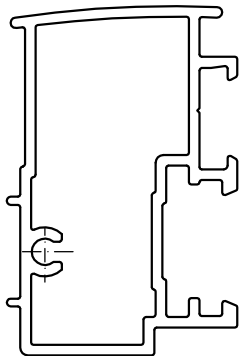
**E41648**  
0.389 Kg/m



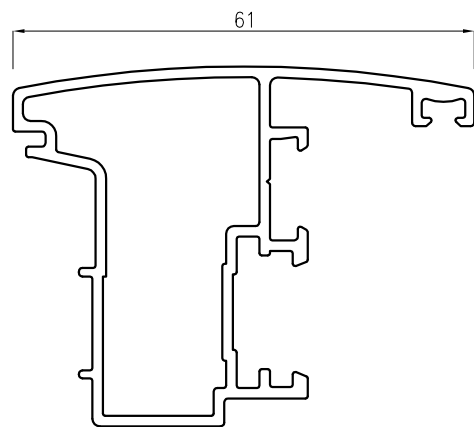
**E41646**  
0.256 Kg/m



**E41649**  
0.402 Kg/m

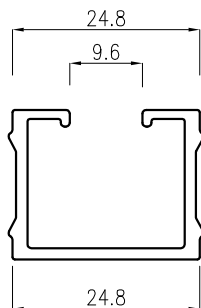


**E41206**  
0.694 Kg/m  
(per soluzione persiana)

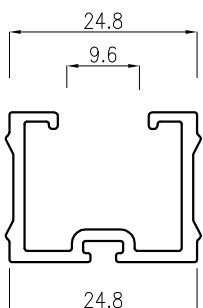


**E41201**  
0.866 Kg/m  
(per soluzione finestra)

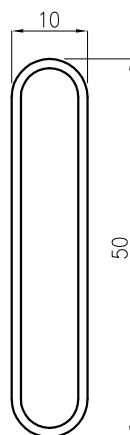
**PERSIANA CLASSICA**



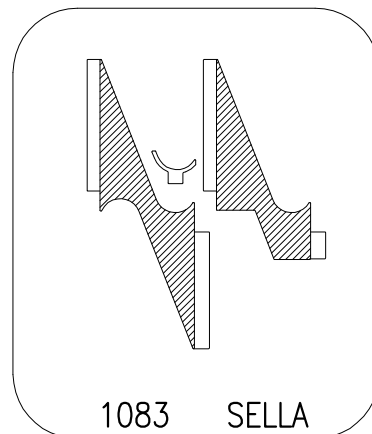
**E41606**  
0.318 Kg/m



**E41657**  
0.336 Kg/m



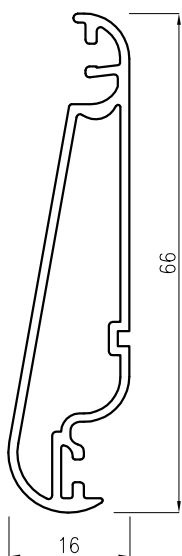
**E10013**  
0.348 Kg/m



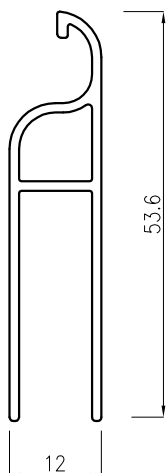
**1083 SELLA**

**PERSIANA ORIENTABILE**

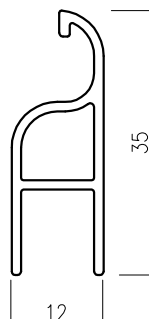
movimentazione TEKNALSYSTEMS " UNIVERSAL "



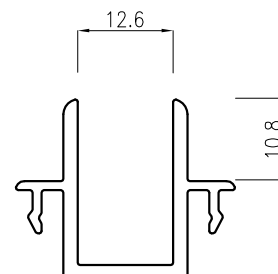
**V80008**  
0.525 Kg/m



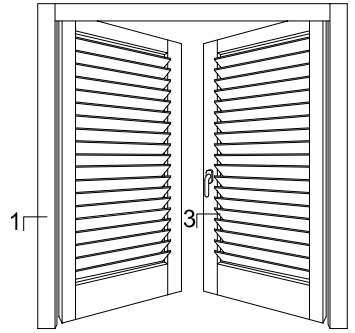
**V80010**  
0.384 Kg/m



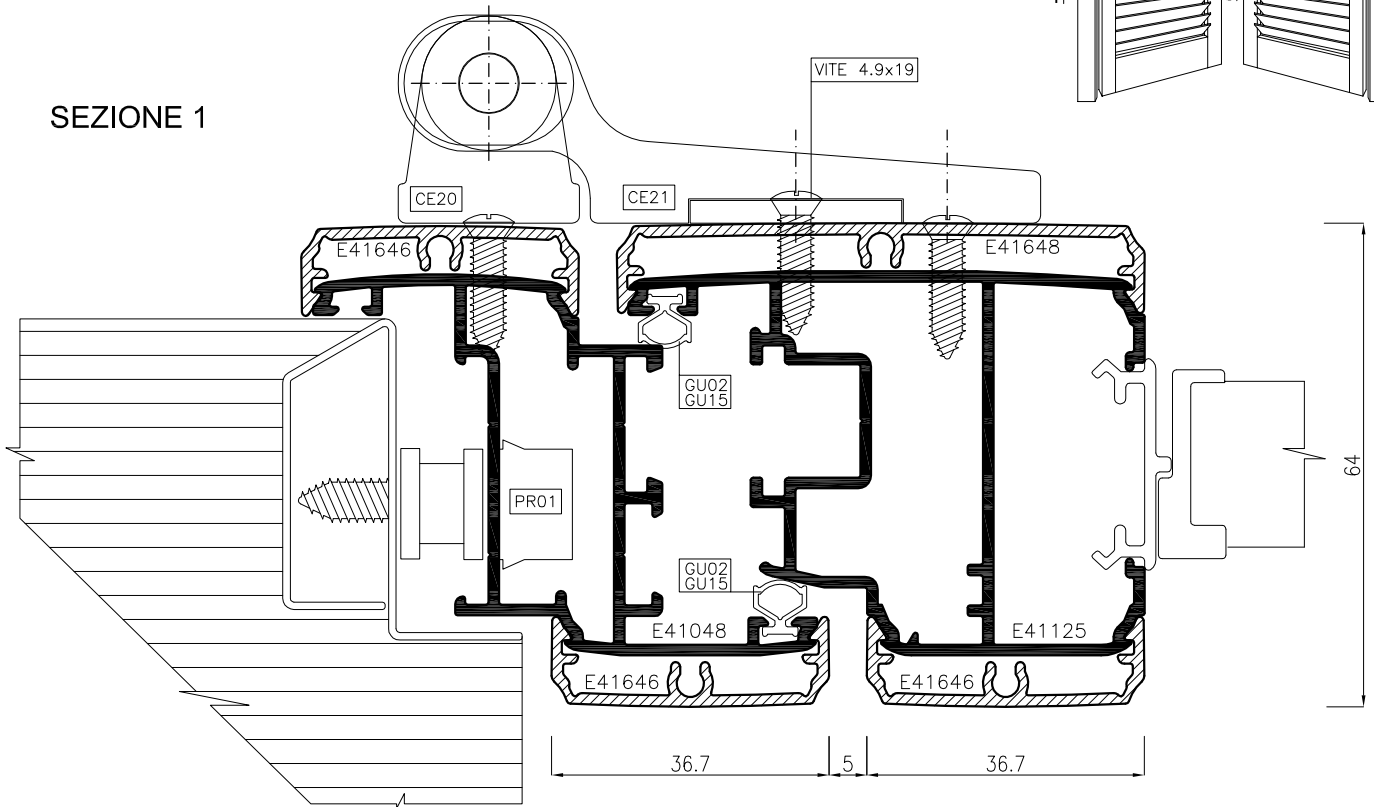
**V80009**  
0.263 Kg/m



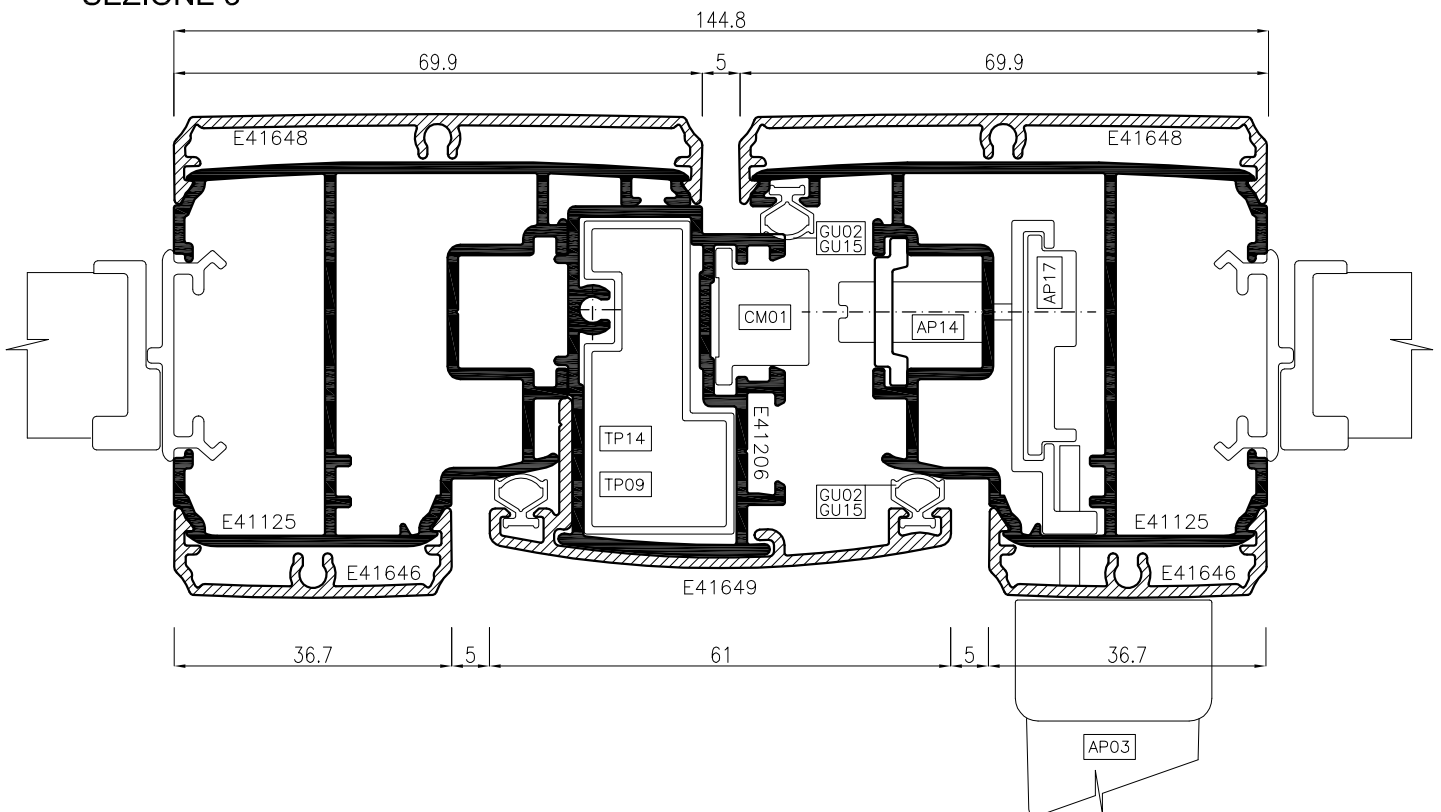
**E41644**  
0.359 Kg/m



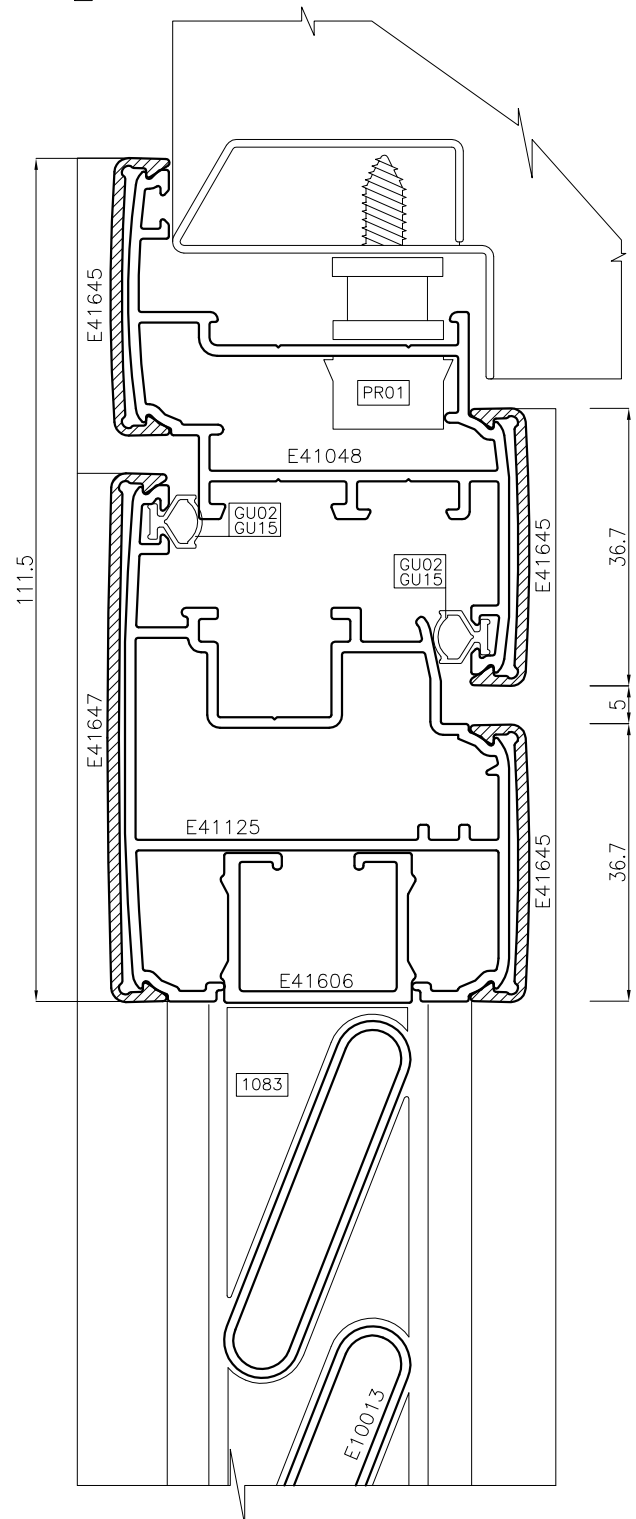
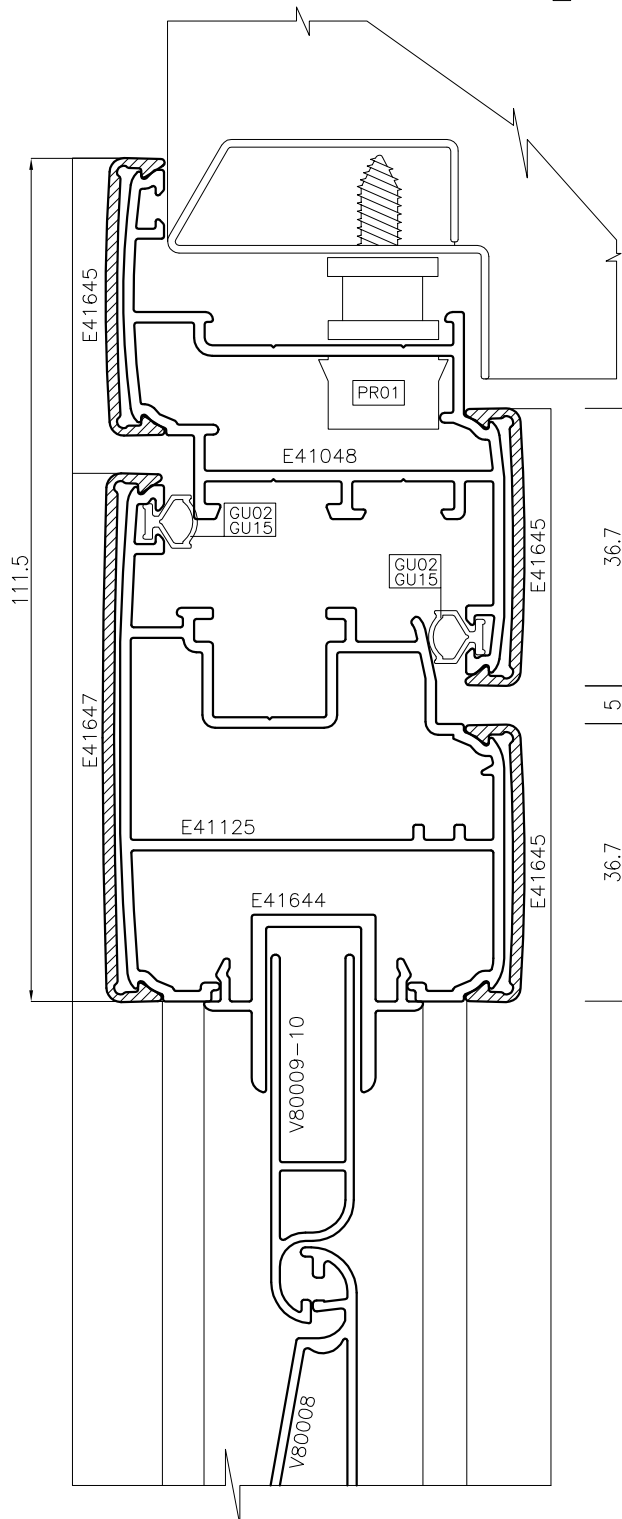
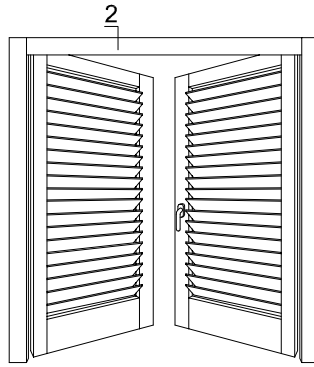
SEZIONE 1



SEZIONE 3

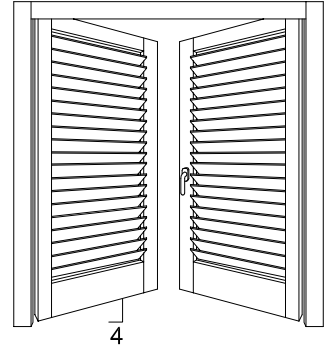
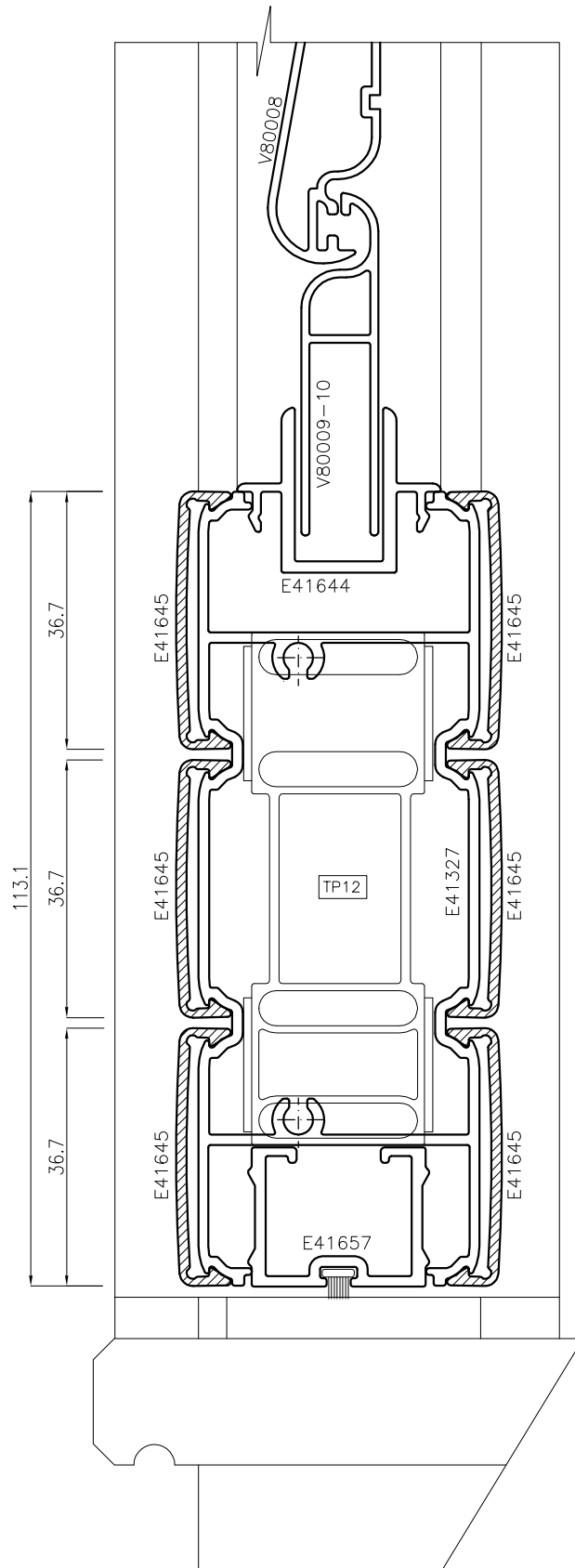


SEZIONE 2

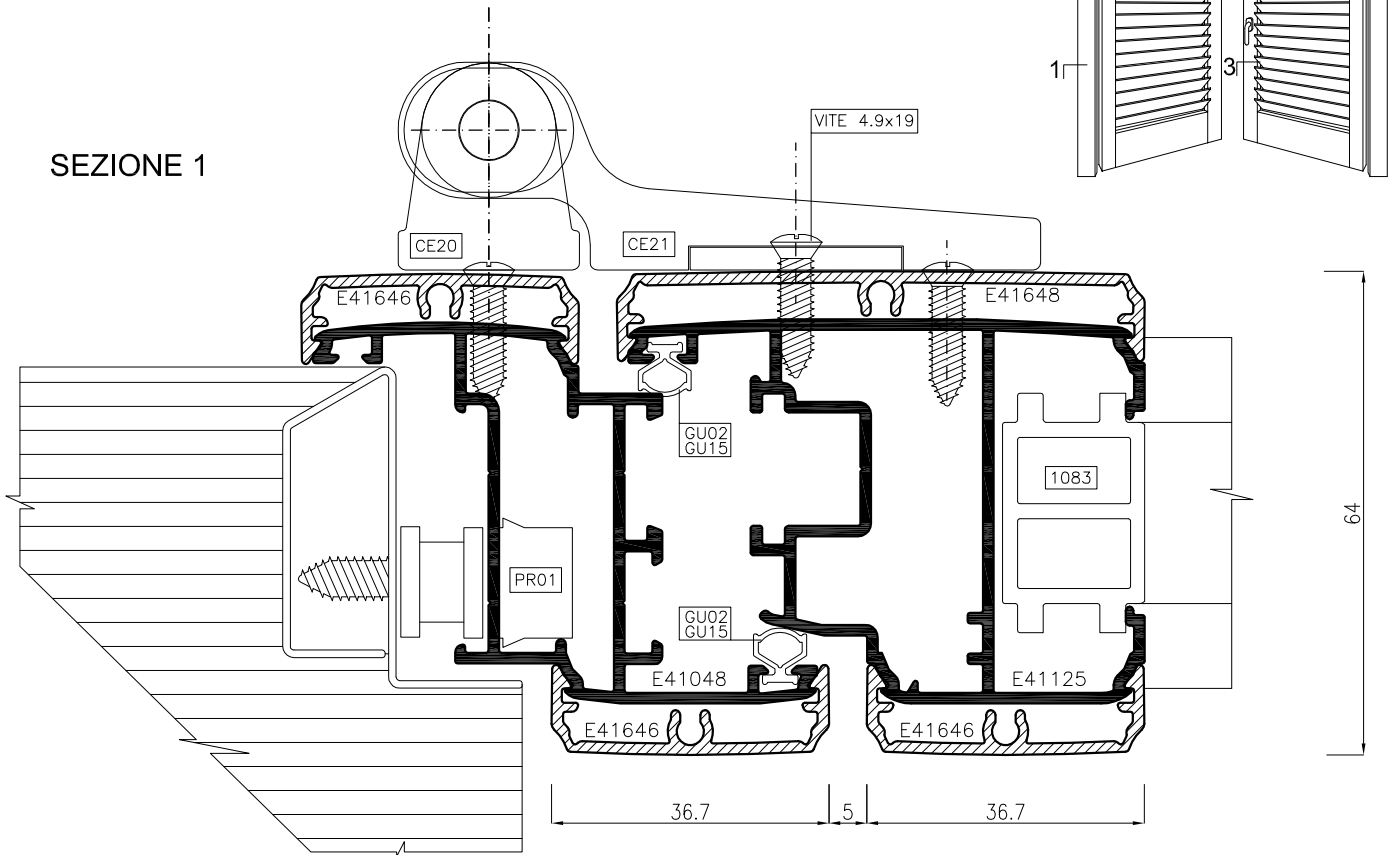




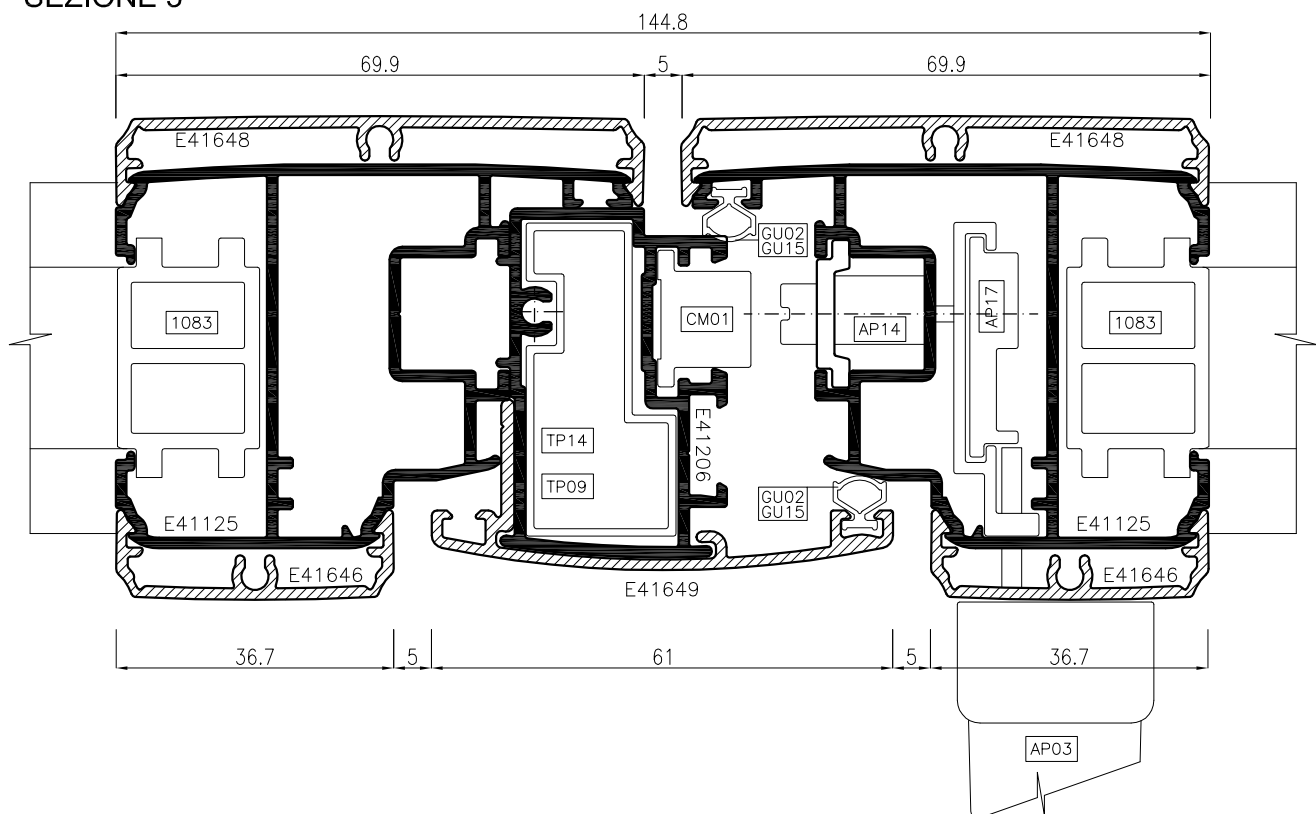
SEZIONE 4



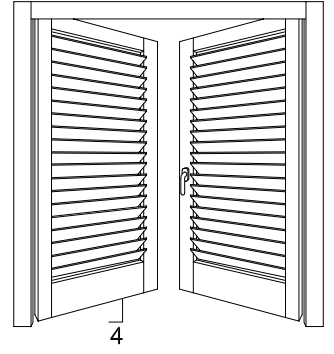
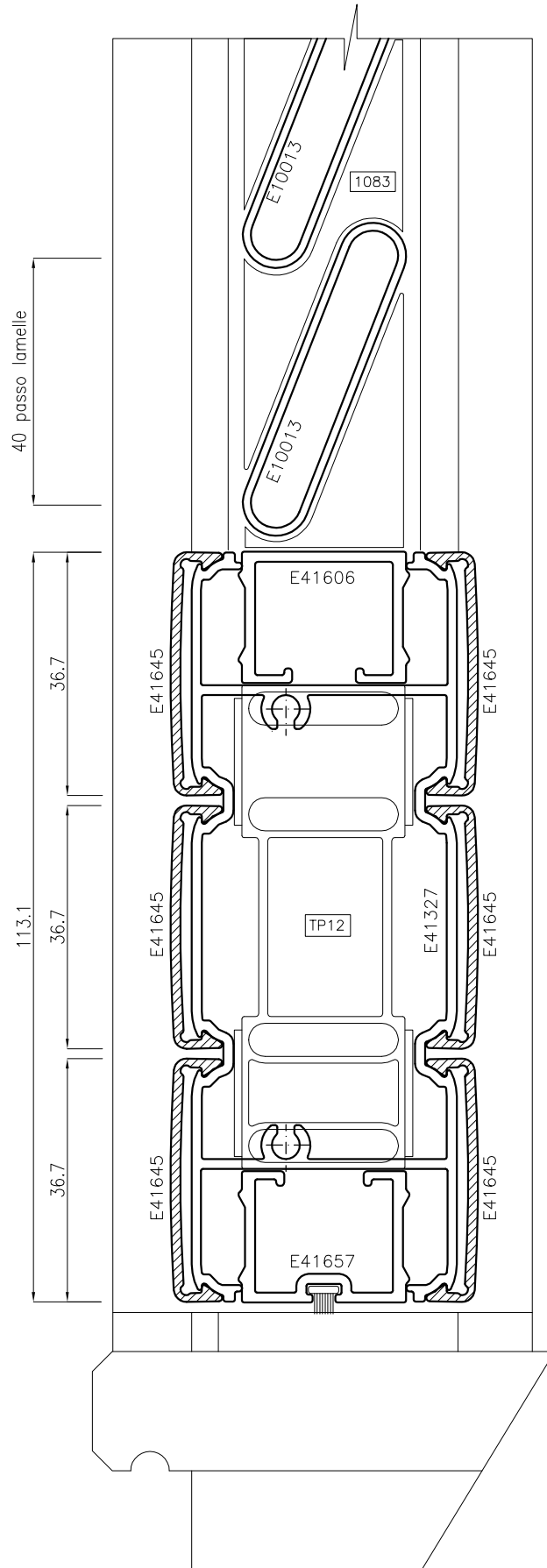
SEZIONE 1



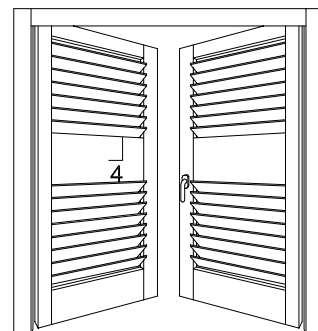
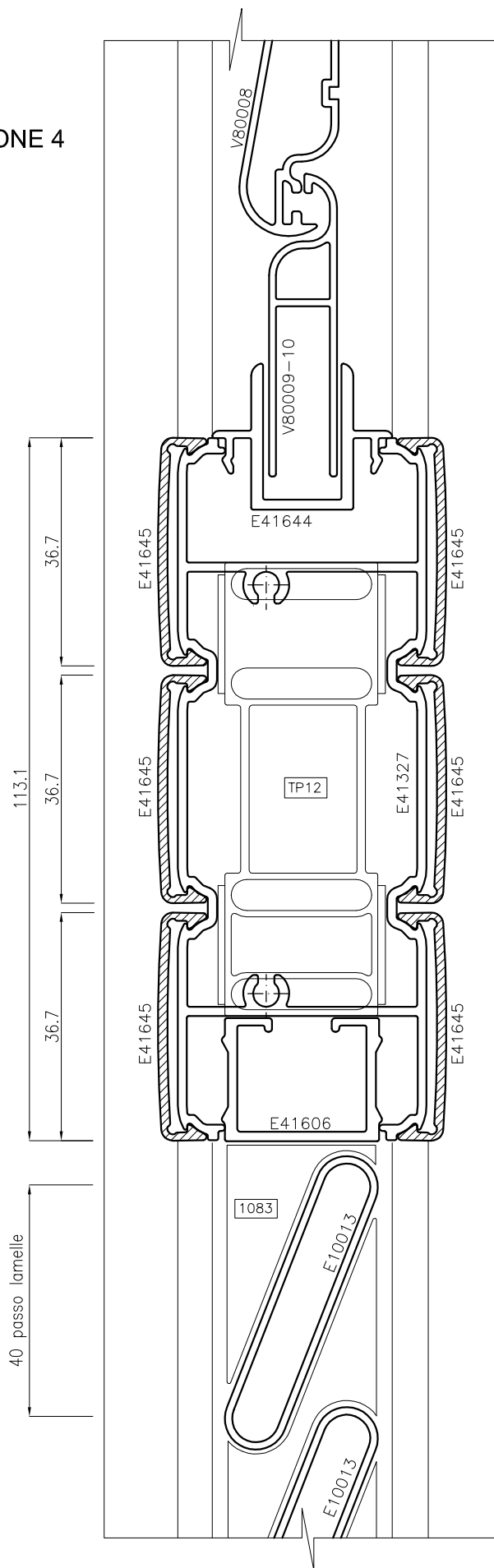
SEZIONE 3



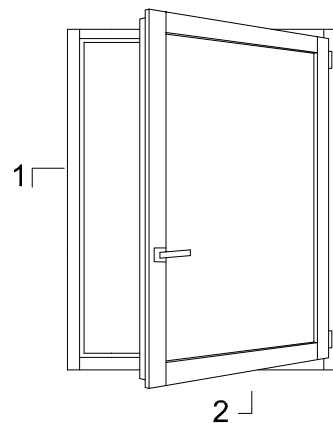
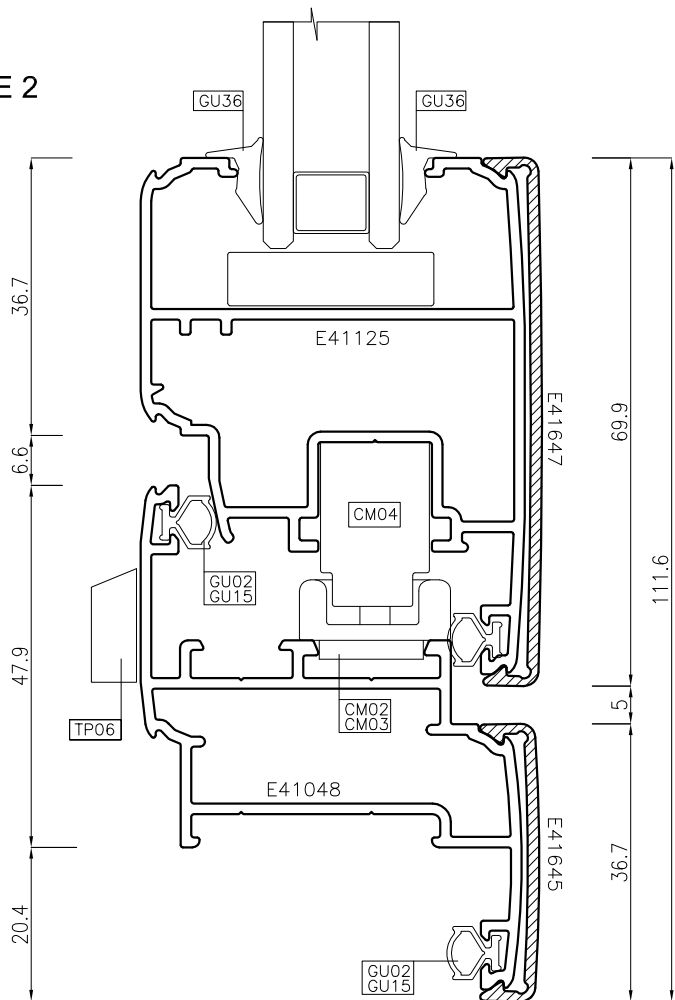
SEZIONE 4



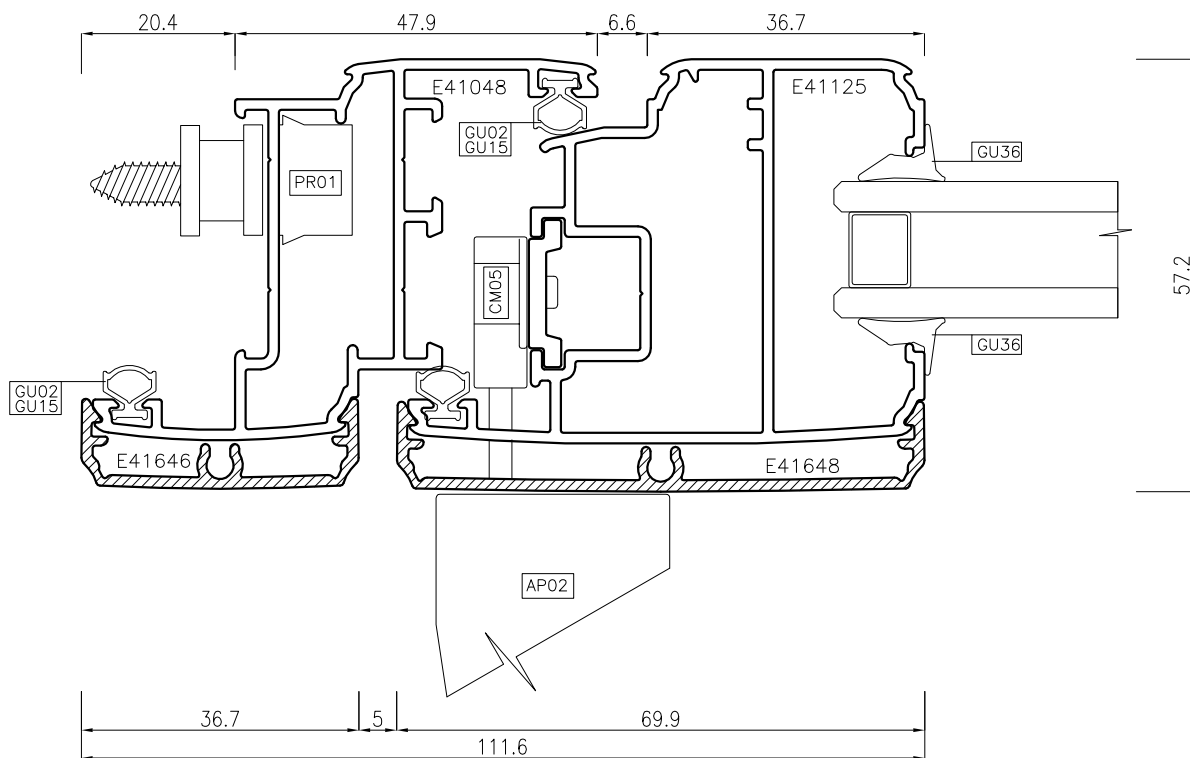
SEZIONE 4



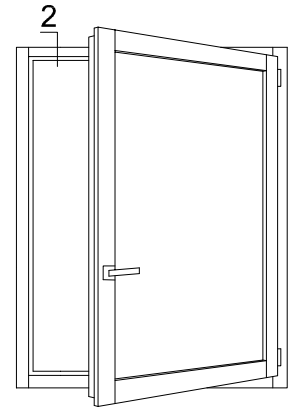
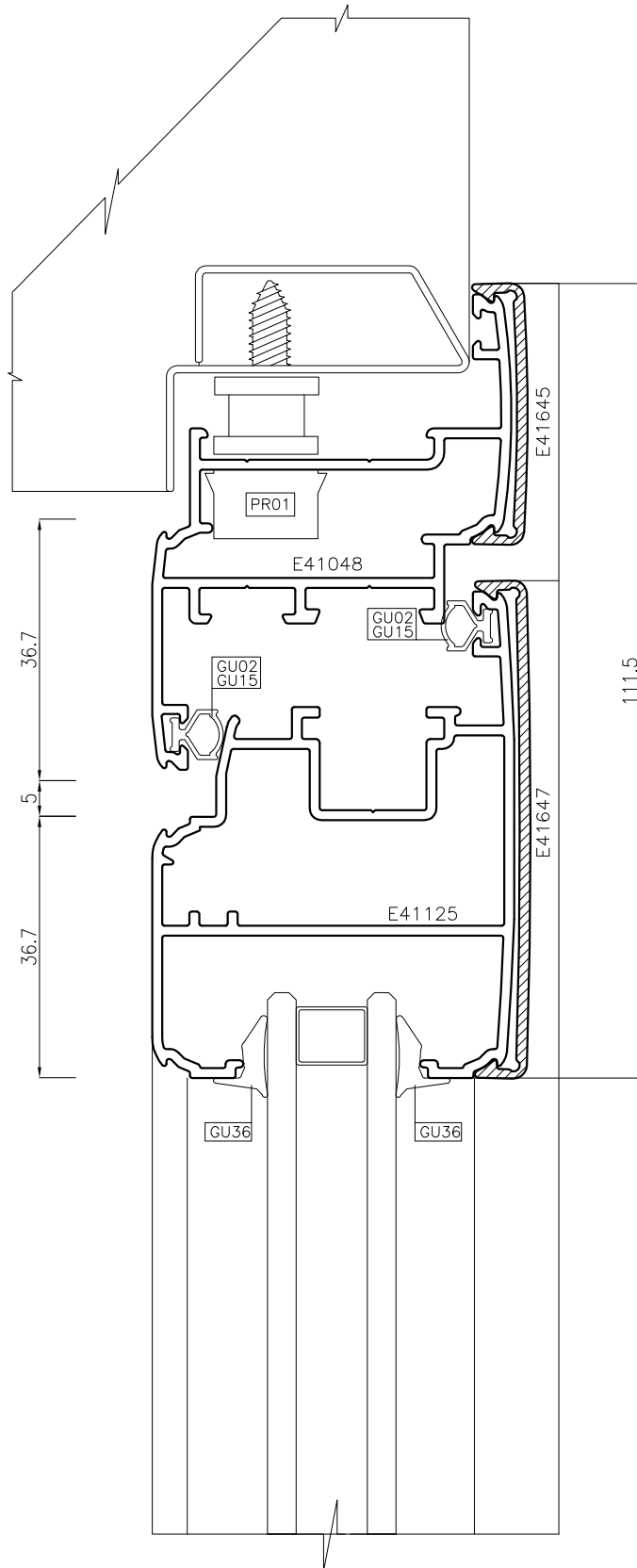
SEZIONE 2



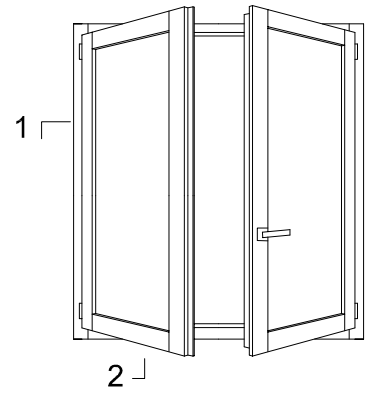
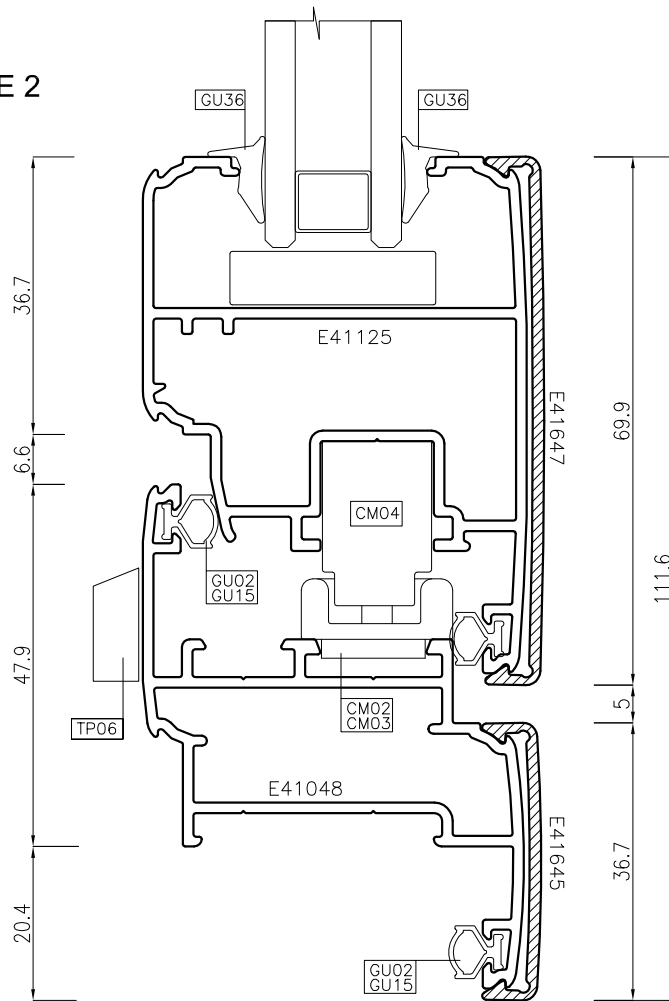
SEZIONE 1



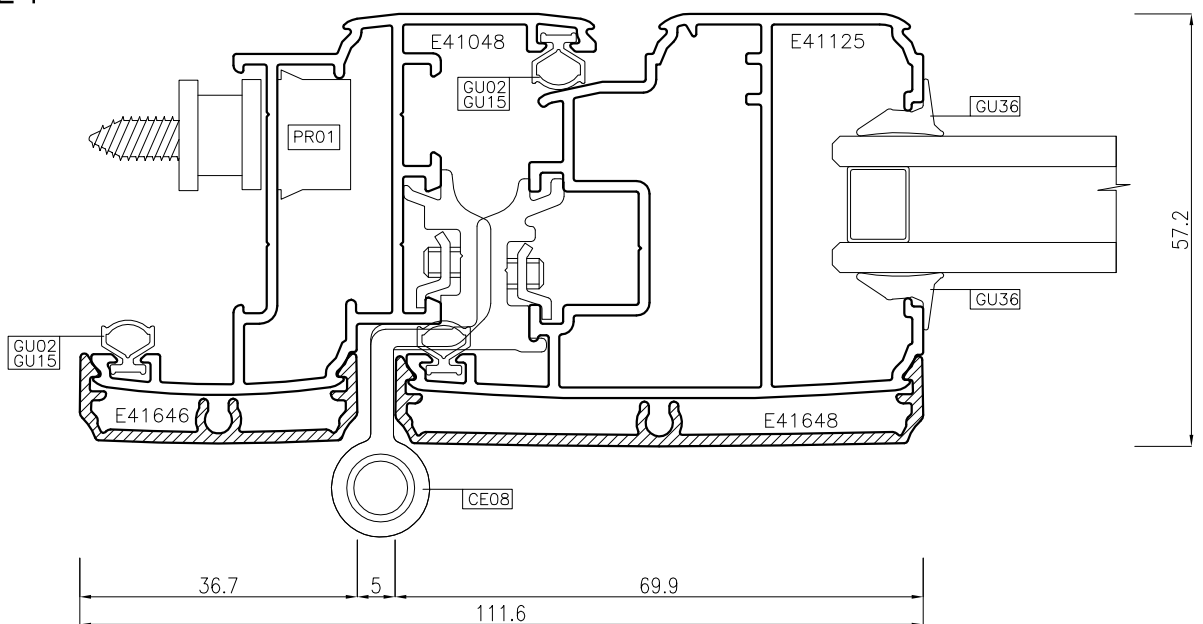
SEZIONE 2

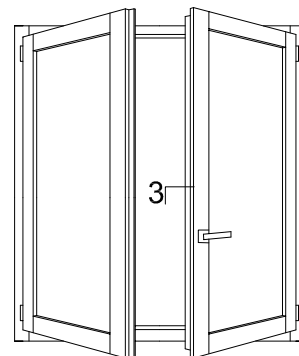


SEZIONE 2

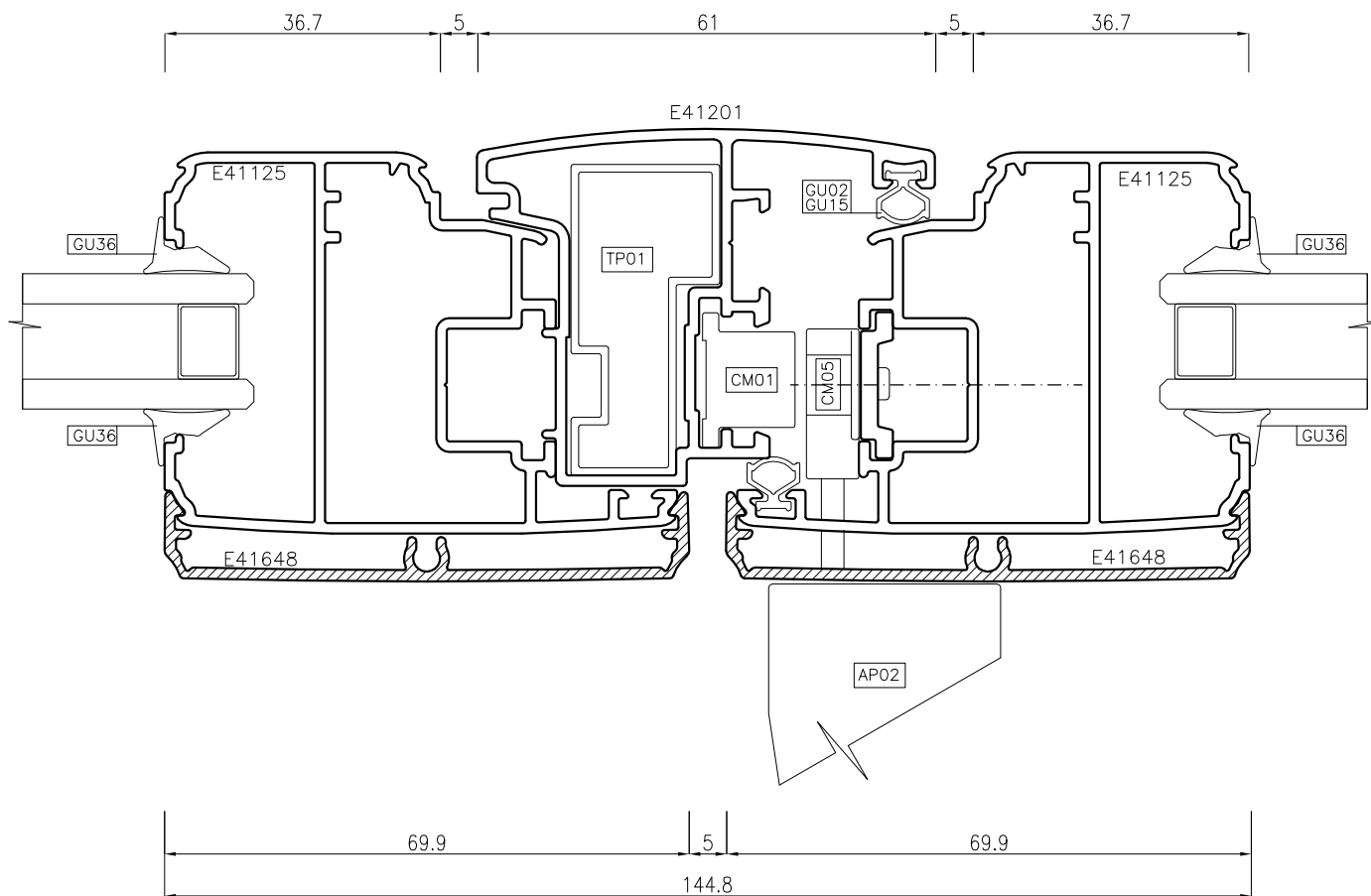


SEZIONE 1



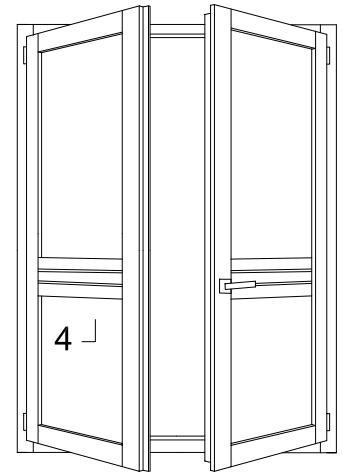
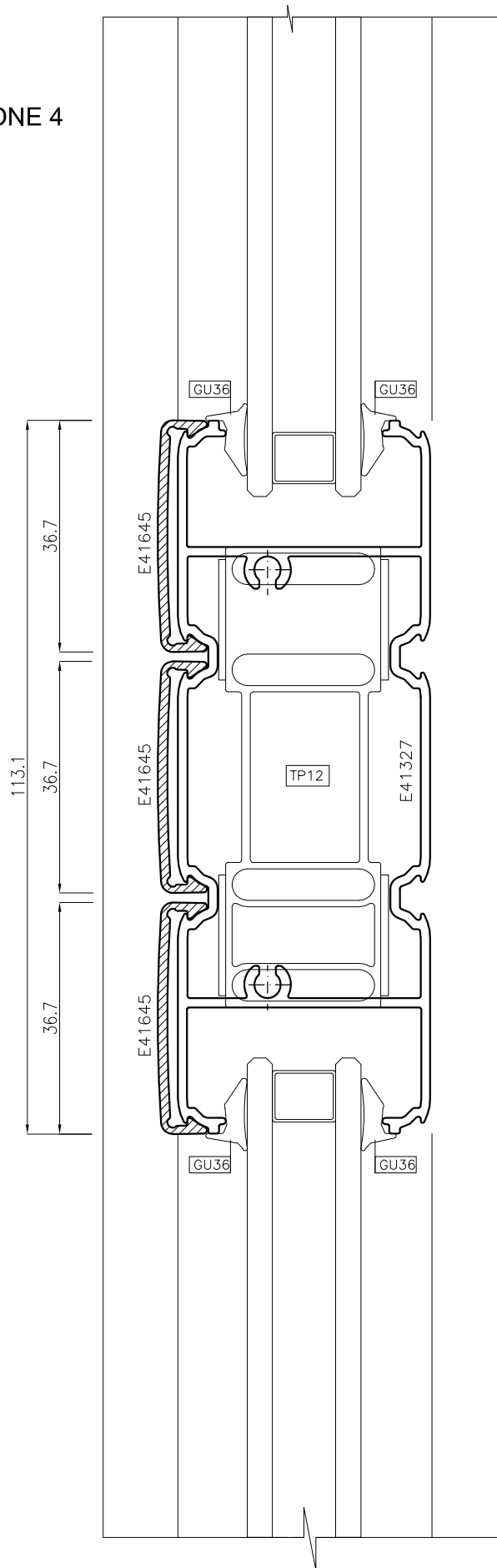


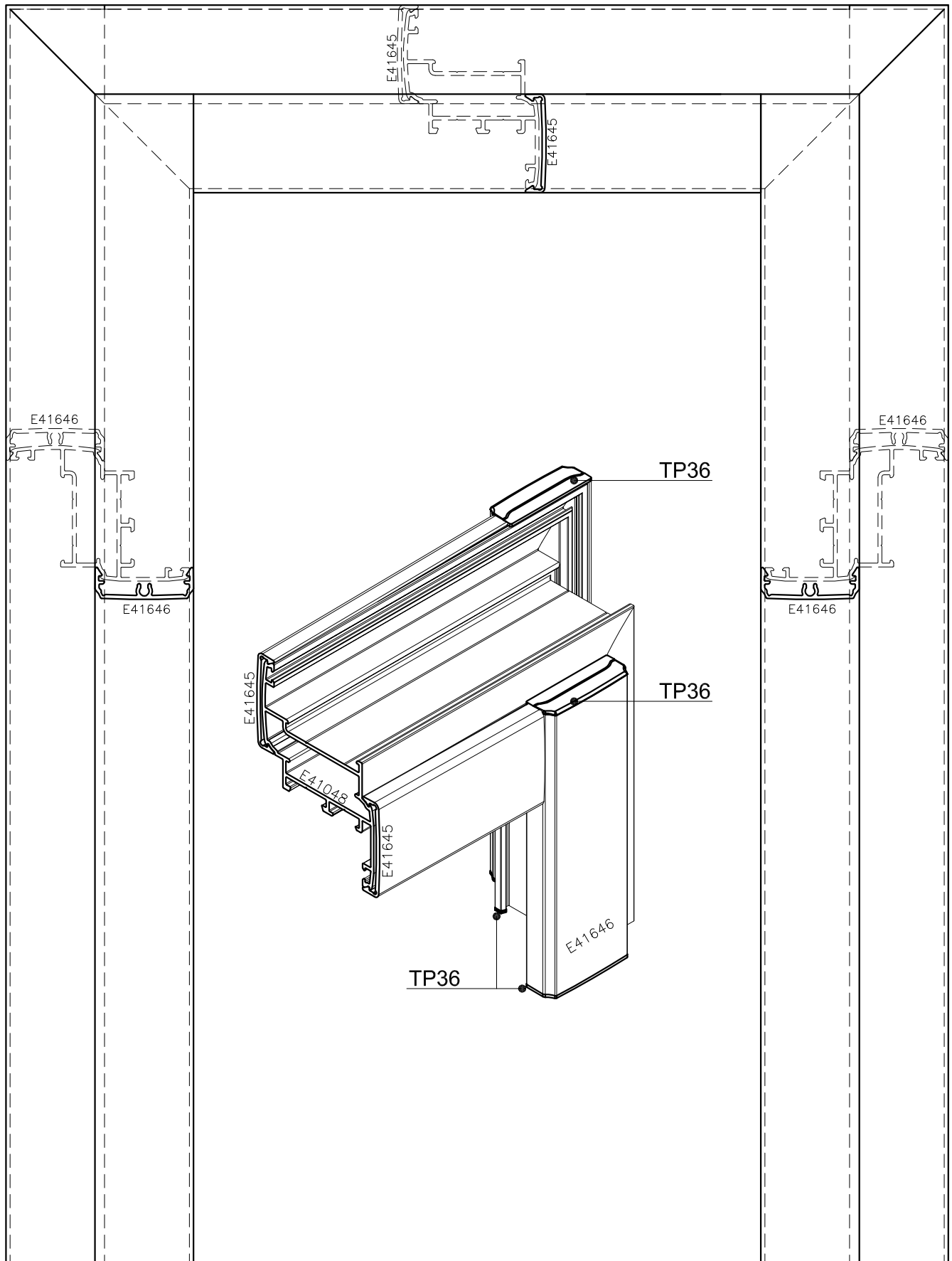
SEZIONE 2

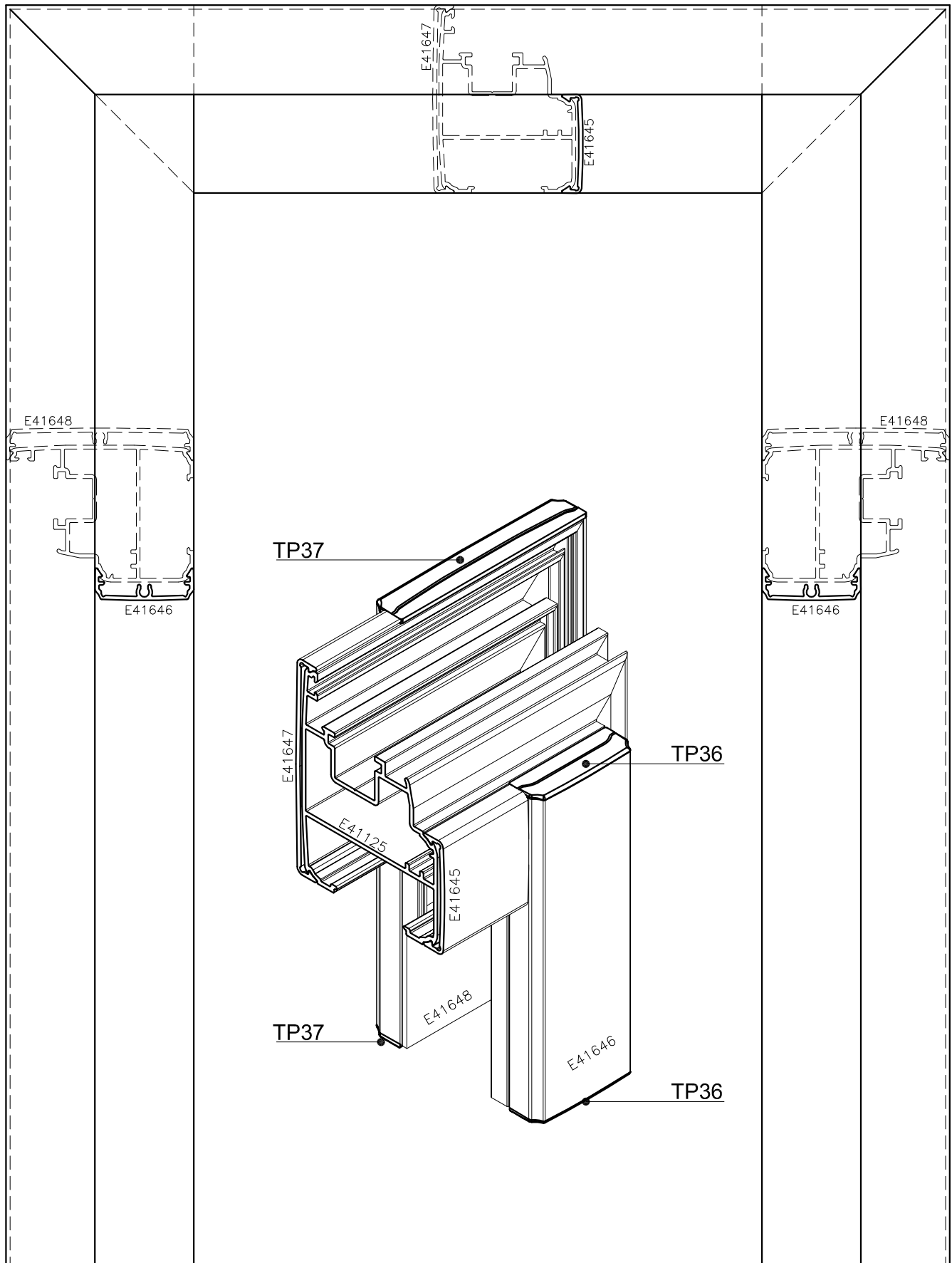


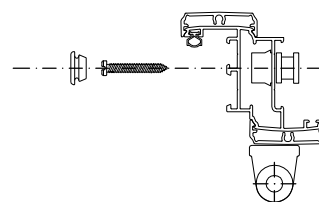
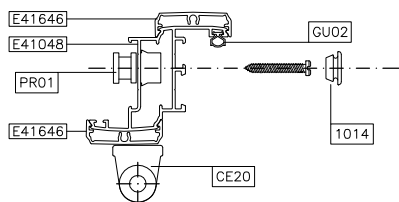
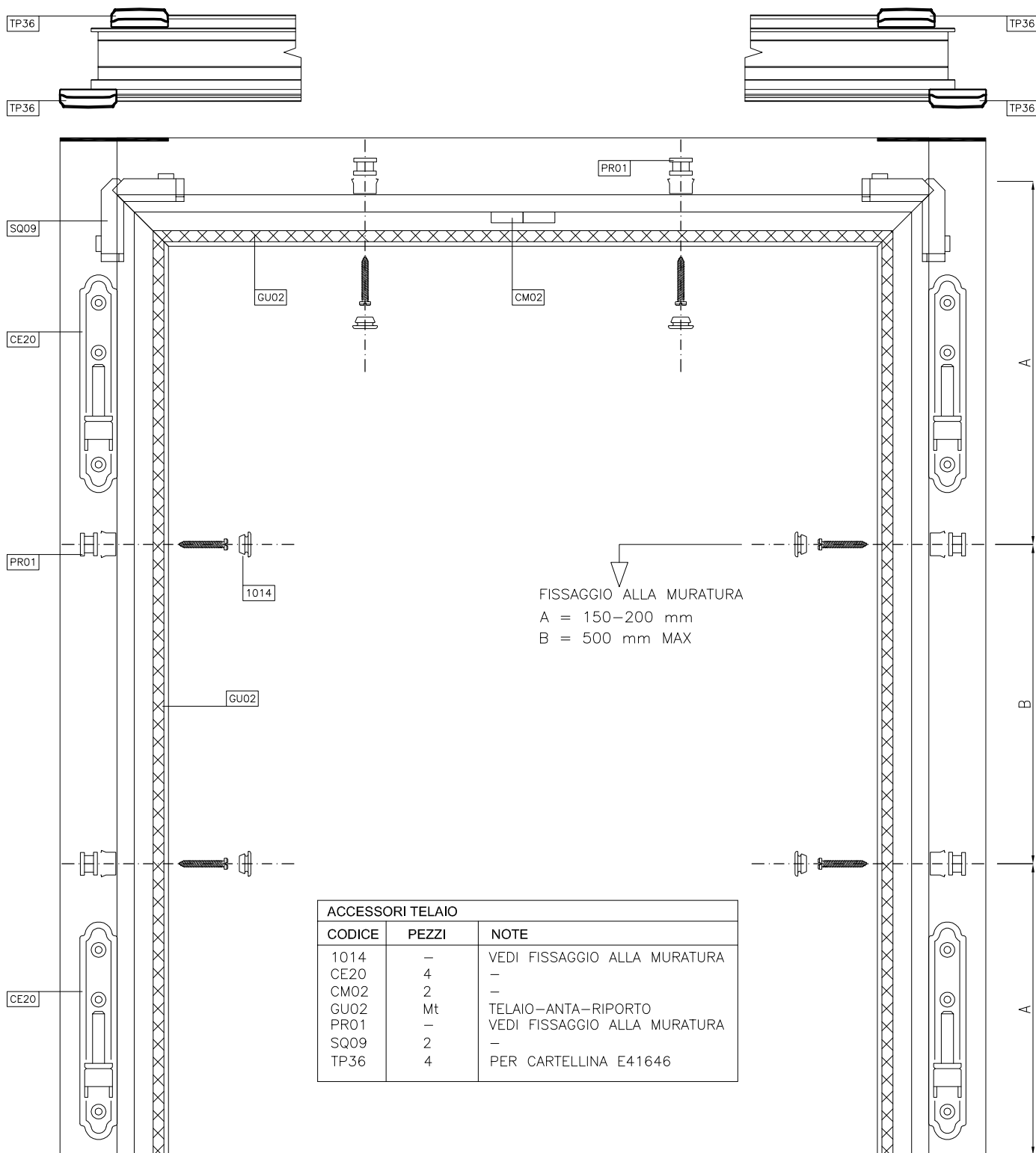


SEZIONE 4

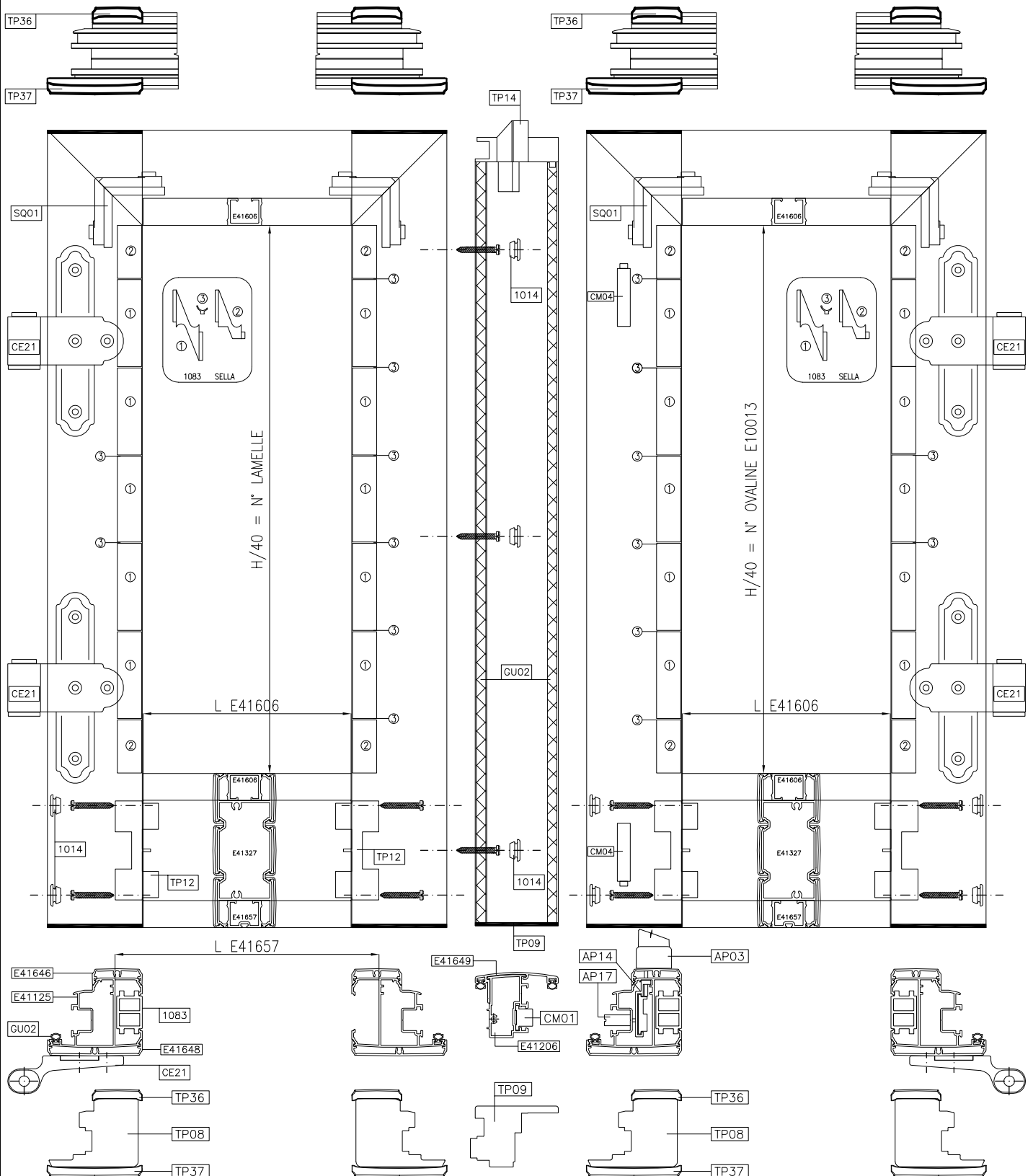








VISTA ESTERNA



VISTA ESTERNA

ACCESSORI ANTE E RIPORTO		
CODICE	PEZZI	NOTE
1014	-	VEDI FISSAGGIO ALLA MURATURA
1083	-	VARIABILE H (passo da 40 mm)
AP03	1	-
AP14	2	-
AP17	1	-
CE21	4	-
CM01	2	-
CM02	2	-
CM04	2	-

ACCESSORI ANTE E RIPORTO		
CODICE	PEZZI	NOTE
GU02	Mt	TELAIO-ANTA-RIPORTO
SQ01	4	-
TP08	2 COPPIA	-
TP09	1 COPPIA	-
TP12	4	-
TP14	1 COPPIA	-
TP36	8	PER CARTELLINA E41646
TP37	8	PER CARTELLINA E41648

# START CLICK

